

Canon
advanced simplicity®

imageRUNNER iR5075

**Bring professional document
publishing in-house**



Print, copy, send and store with more control than ever before

Speed, power and reliability is just the start

The imageRUNNER iR5075 features the latest Canon technology to meet the needs of today's high-volume departments and light production environments.

Utilising Canon's next-generation imageCHIP system architecture for exceptional multifunction performance, the iR5075 provides powerful capabilities to streamline workflows and speed up job completion while keeping information securely in the hands of authorised users.

With a full range of document handling capabilities, powerful print controller options, Canon's MEAP technology for customising device functionality, and options such as Canon Universal Send for efficient document distribution, the versatile imageRUNNER iR5075 enables every employee to produce professional-quality documents with ease.



Powerful and reliable performance

The imageRUNNER iR5075 is powered by Canon's next-generation imageCHIP system architecture for fast multifunction processing and true job concurrency. The dual CPU design rips through image data at fast speeds, and the vast 1GB RAM memory capacity and 40GB hard disk drive provide the virtual space to support multiple users and workflows.

Canon's On-Demand fusing technology also helps busy workgroups stay productive by keeping power consumption to a minimum while providing near-instant warm up times. The device is also built upon a sturdy yet lightweight frame to limit vibrations and help deliver consistent image quality page after page.

Enhanced image quality

The iR5075 offers a complete range of image and document manipulation features including support for 1200 x 1200 dpi output for outstanding image quality on every page. It also employs Canon's Fine Character & Edge Technology (FCET) for clear, crisp text and images.

Superior paper handling

Every imageRUNNER iR5075 includes dual frontloading 1,500-sheet paper drawers plus dual frontloading 550-sheet cassettes and a 50-sheet Stack Bypass for a standard 5-way 4,150-sheet paper supply. A choice of two optional paper decks boosts the paper capacity to a generous 7,650 sheets for virtually uninterrupted operation. Standard Automatic Trayless Duplexing technology keeps the devices running at full rated speed during duplex print and copy jobs.

Advanced collation and finishing options

The imageRUNNER iR5075 can be configured with a wide range of finishing accessories to help to bring professional document publishing capabilities in-house.

Two advanced finishers support high-volume stacking and can be configured with a choice of options.

This includes a Document Insertion Unit which provides the capability to insert pre-printed cover sheets into job streams and a Document Insertion/Folding Unit that automates C and Z folding tasks.

Efficient hardcopy scanning

High volume environments will increase scanning productivity with the new Single Pass Duplex Scanner/Feeder, standard on every imageRUNNER iR5075 device. Equipped with dual scan readers, one positioned on each side of the original paper path, it provides efficient two-sided scanning, at up to 100ipm, for robust document management and flexible paper handling.

Multifunction features:

- Print at up to 75ppm
- 1,200 x 1,200 print resolution (maximised)
- Generous 7,650 sheet paper capacity
- Standard 100 sheet Single Pass Duplex Scanner/Feeder



imageCHIP System Architecture



Large paper capacity



iR5075 configured with A3 side paper deck, document insertion unit and saddle finisher

Work faster and smarter

All you need for professional results

Even with all its advanced features, the first thing you'll notice is just how simple the iR5075 is to use. Even the most novice user will find that operating the device is second nature, either from the desktop using the easy-to-follow print driver interface or from the device's large, colour, touch-screen display.

The iR5075 supports a host of standard and optional productivity-enhancing capabilities that help simplify operation, streamline complex tasks and facilitate information sharing to ensure every user in your office completes the job the first time.



Highly accessible and simple to operate

Ease of use starts with the imageRUNNER's easy-to-read, full-colour touch panel and interactive on-board help menus. Back at the desktop, users can learn about the device's functions using the new Canon tutorial CD that features a step-by-step training guide complete with audio instructions. The device user manuals are also provided on CD-ROM instead of in hardcopy format, for easier sharing and faster topic searching.

Using the Remote Operator's Software Kit, users can have full access to imageRUNNER functions, right from their laptop or desktop PC screen. Users with visual or motor impairments can also operate the device using spoken commands or receive audible confirmation of selected functions with the optional Voice Operation Kit.

Sophisticated copying made simple

Support for advanced copy features like Job Block Combination, enables the production of complex documents by scanning multiple batches of originals saved with different settings and printing them as one document. Copy features such as Express Copy help speed up job programming and complete document sets.

Enhanced document storage

To streamline document storage, the enhanced Mail Box feature allows each Mail Box to be personalised with a user name, password and document deletion period. Another improvement is the Copy & Store and Store & Print features that streamline workflows by enabling the user to simultaneously copy and store and store and print a document in one scanning operation. With optional Universal Send installed, documents can be retrieved and distributed in file formats such as TIFF, PDF and JPG.

Maximise the power of the web

Support for the Web-based Distributed Authoring and Versioning (WebDAV) protocol facilitates employee collaboration over the Internet. Users can communicate from remote locations by scanning and securely sending documents from an iR5075 device to a shared storage service¹. Canon's Web Access Software option² allows documents on internet or intranet sites to be viewed directly from the device's full-colour touch-panel display, and then printed with the desired settings.

Professional printing with confidence

The optional UFR II/PCL Printer Kit-S1 offers support for PCL 5e and PCL6 emulations, and includes Canon's UFR II (Ultra Fast Rendering) print driver language for efficient processing between printer and driver. Users who prefer Postscript workflows can use the Postscript 3 driver.

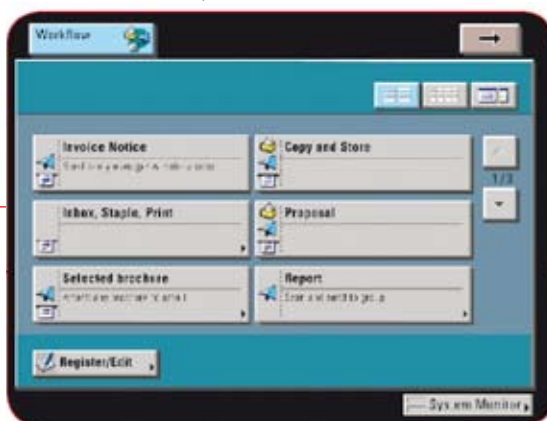
Streamline your production workflow

Environments with higher bandwidth needs can add an imagePASS S2³ network print controller to their imageRUNNER configuration. With a 2.8GHz Intel Celeron processor, 80GB hard drive and 256MB of DDR SDRAM, this powerful tool makes light work of printing even the most complex pieces. It also gives users access to advanced options such as Hot Folder and Virtual Printers, and includes EFI Impose to manage complex workflows with automated queuing.



Large colour touch screen makes operation simple

Workflow Composer Menu



¹ Requires the optional Universal Send Kit

² Requires the optional printer kit

³ Available mid 2007

Comprehensive control and security

Easy to monitor, manage and protect

Device administration can be a time consuming and costly activity, but with the powerful, yet easy-to-use management tools available for the iR5075, managing your imageRUNNER device is a breeze. Whether you are running a large imageRUNNER fleet spread over multiple locations or managing a single device in a small office, these tools will make device management easy and efficient so you can focus on more important tasks.

Security is another major concern, especially for organisations that deal with sensitive information. With the iR5075, you can choose from a variety of document, device and data security features to help maintain security and meet your organisation's compliance obligations. Your business can rest assured knowing only authorised personnel will have access to your imageRUNNER device and the data stored inside it.



Centralised device management

Canon's imageWARE Management Console is a Web-based utility that facilitates centralised management of networked devices. Versatile and scalable, imageWARE Management Console enables remote management of imageRUNNER device settings, discovery of new devices using automated tasks, and device error notification via e-mail.

With the Device Information Delivery function you can specify which users have access to the device and its functions, replicate device settings and copy Address Books to multiple devices through for easy management of devices across the network.

For even greater control, the preinstalled Remote UI utility provides the ability to track the progress of jobs in queues, monitor paper and supply levels, access Mail Boxes and edit Address Books.

Embedded remote monitoring software

Canon's optional eMaintenance service is a remote device management solution designed to optimise the productivity of your imageRUNNER device and help save your business time and money. Using Remote Diagnostic System (RDS) software embedded in the iR5075 device, eMaintenance allows a dedicated Canon server to collect automatic device meter readings and monitor maintenance requirements and device performance remotely.

Robust device security

Secured Print: Use this feature to set a password for highly sensitive or confidential files to ensure the job does not start printing until a password is entered at the device.

Department ID Management: By registering a Department ID and password for each department, this feature allows you to control costs by setting volume limits on copy, scan, and print jobs for up to 1,000 departments.

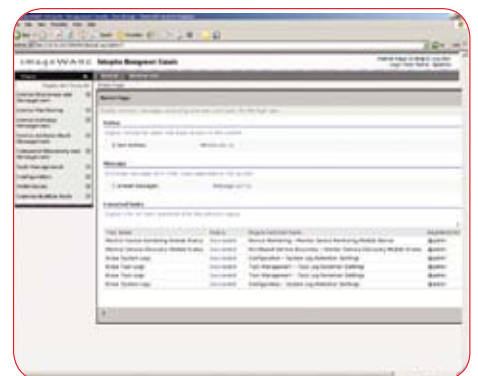
Single Sign On: This feature helps you control access to imageRUNNER functions by prompting users for the same username and password they use to access other network devices like their PC.

Advanced document and data security

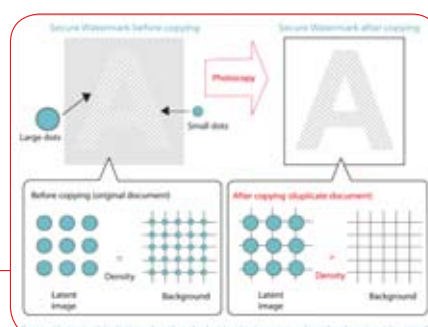
Secure Watermark: This optional feature embeds text and background patterns on printed documents. These become visible if the page is reproduced, deterring illegal distribution of sensitive information.

HDD Encryption Kit: This optional kit applies a powerful 128-bit data encryption algorithm to the data as it is written to the internal hard drive.

HDD Erase Kit: This optional kit uses three levels of disk overwriting to permanently remove data from the hard disk once printed, making it impossible to recover this data after completion of the print job.



imageWARE Management Console



Secure Watermark

Fast, secure and inexpensive Universal Send

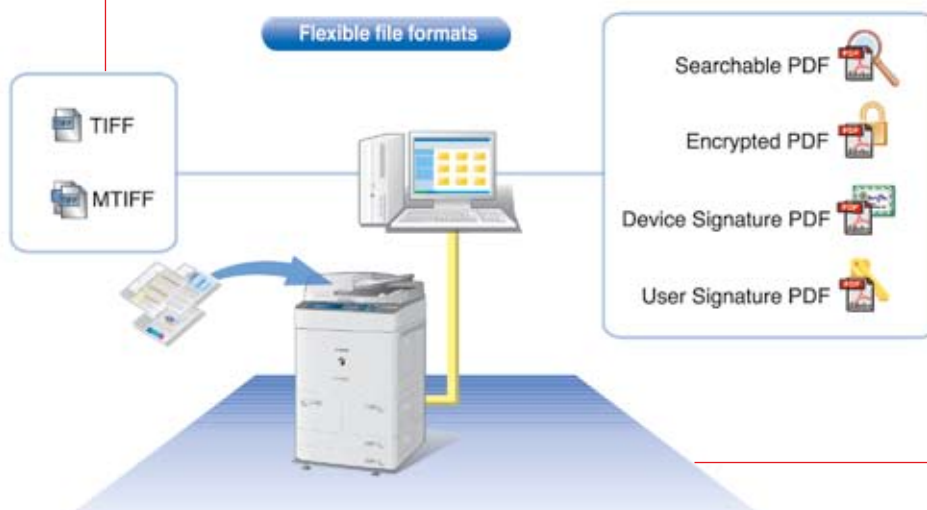
Scan, save and send in one step

Canon Universal Send is an optional feature that provides a fast, secure and inexpensive way to distribute documents in electronic form direct from an imageRUNNER's touch-screen display.

This unique technology enables you to scan, save and send documents in common electronic formats including PDF and TIFF automatically. In one step you can scan a document and:

- Email it to an individual or group
- Save it on your network
- Store it in an imageRUNNER mailbox
- Send it as an iFAX over the internet
- Send it to a folder on your desktop

Canon's Universal Send offers the widest range of file formats of any MFD device, giving you total flexibility.



Device Signature PDF

When you create a PDF with Universal Send, this optional feature embeds a digital signature within the PDF that allows the user to verify the originating device.

User Signature PDF

Another Universal Send option, this feature allows users to embed their own digital signature in a scanned PDF so that recipients can verify the source and easily determine if the document has been tampered with.

Find information fast

The Searchable PDF option makes it easy to find information later using Adobe Acrobat. Select searchable PDF to save a document as full-text searchable automatically.

Share information securely

Password protect documents before sending with the optional PDF-encryption feature, preventing unauthorised printing or editing. Tag and track documents with the Send ID feature.

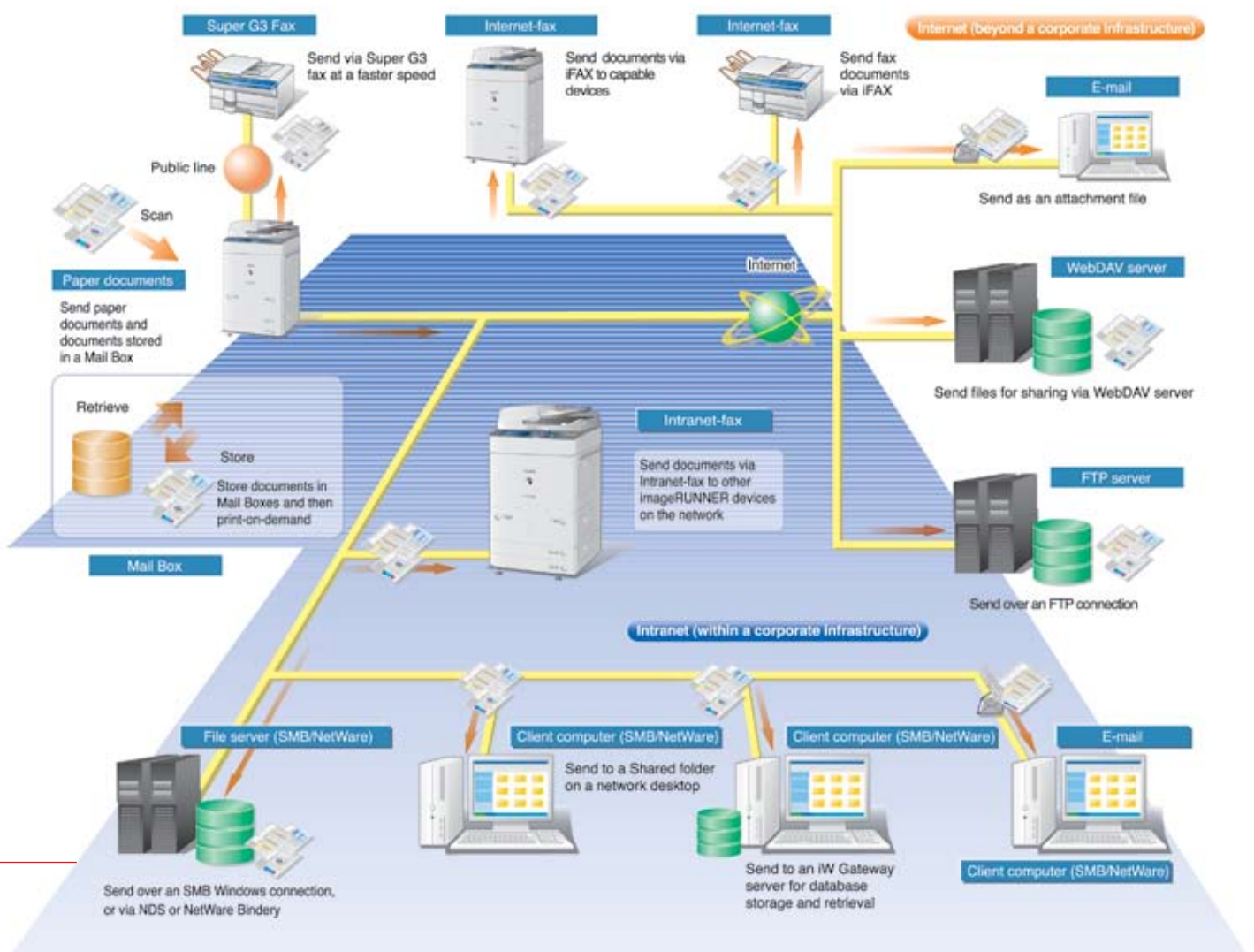
Handy built-in mailboxes

imageRUNNER mailboxes are a convenient place to store things like frequently used forms for printing on demand. Set up to 100 mailboxes and store 6,000 pages of information.

Advanced mailbox features

Use the advanced features to edit and merge documents on the device before sending or printing. Use URL Send to reduce network congestion by sending a URL link rather than the document itself.

Flexible electronic document distribution with Universal Send



Simplify business with an electronic document workflow

Technology that adapts to the way you work

MEAP or Multifunctional Embedded Application Platform is a unique software platform that enables applications to be installed and run on an imageRUNNER.

This breakthrough Java-based open-platform technology makes business more efficient by transforming the behaviour of an imageRUNNER to suit your organisation's processes.

Put simply, MEAP is like an operating system for imageRUNNER devices. With it both customised and off the shelf MEAP applications can be installed on a device and accessed from its touch-screen display or built-in web browser.



Customise functions

With MEAP, you can customise the functions of an imageRUNNER and add-on devices like proximity card readers. As an example, you can use it to customise a device to deal with different documents in different ways automatically.

Automate processes

Depending on the application, MEAP can simplify complex document processing chores, automate tasks like document management and facilitate advanced functionality. The potential for adaptation is virtually limitless.

Ready-made or custom applications

The versatility of the MEAP platform enables you or your choice of developer to create custom software applications specifically for your organisation. Alternatively, choose from a growing range of packaged MEAP applications from Canon. These include:

Secure Print for MEAP. This unique application protects sensitive information and reduces waste by requiring staff members to swipe their building access cards at an imageRUNNER to release their print jobs.

Secure Login for MEAP. With this application you can control access to the copy, scan, email and fax functions of an imageRUNNER. Detailed information about device usage is stored in a log for direct upload to a cost accounting system.

Secure Fax for MEAP. This application uses existing building access cards to control access to the fax function of an imageRUNNER. Connecting directly to your existing fax server, it also saves money as no fax card is required to send faxes from the device.

Canon Document Solutions software

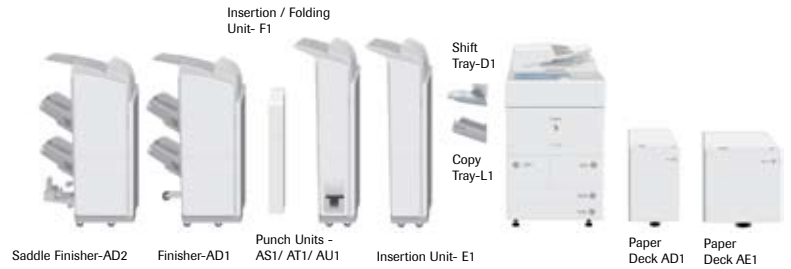
Teamed with an imageRUNNER, these software applications simplify the way your organisation stores, accesses and distributes documents. Each of Canon's seven software categories includes a selection of applications to meet the requirements of any organisation. Most can be implemented straight from the box or customised to suit.

MEAP applications can be operated directly from the LCD touch-screen panel



Produce professional-looking booklets with the saddle finisher option

imageRUNNER iR5075 Specifications



BASIC SPECIFICATIONS iR5055 / iR5065	
Type:	Digital, Multifunction Imaging System
Imaging System:	LaserDry Electrostatic Transfer
Developing System:	Dry Mono Component Toner
Image ServerMemory:	Standard 1GB RAM + 40GB HDD (Max. Capacity: Approximately 20,000 Originals)
First-copy Time:	3.3 seconds from platen glass 5.1seconds from ADF
Warm-up Time:	30 seconds orLess
Acceptable Originals:	Sheets, Books, 3 Dimensional Items (Up to 2kg)
Max. Original Size:	A3
Max. Copy Size:	A3
Min. Copy Size:	A5R
Max. Mailboxes Supported:	100
Max. Copy Reservation:	5 Jobs
Copy/Scanning Resolution:	600 dpi x 600 dpi
Printing Resolution:	1200 dpi x 1200 dpi 2400 dpi x 600 dpi maximised
Halftone:	256 gradations of grey
Copy/Print Speed:	75 pages per minute: A4
Duplexing:	Standard Automatic Trayless Duplexing
Magnification Reduction/ Enlargement:	25% to 400% (Platen) 25% to 200% (Feeder)
Power Source:	230V: 10A, 50/60Hz (common)
Dimensions (mm):	1207(H) x 643(W) x 743 (D)
Weight:	215kg
PAPER SUPPLY	
Standard:	Dual Front-loading Decks (1,500 Sheets Each) Dual Front-loading Cassettes (550 Sheets Each) 50-sheet Stack Bypass
Optional:	3,500-sheet Paper Deck (Total: 7,650 Sheets)
Multiple Copies:	1 to 9,999
Paper Weights:	64 to 200g/m2 (550-sheet Cassettes) 64g to 200g/m2 (Manual Bypass, 1,500-Sheet Drawers and 3,500 sheet optional Paper Deck)
AUTOMATIC DOCUMENT FEEDER	
Acceptable Originals:	A3 to A5R
Capacity:	100 Sheets (A4/80g/m2)
Max. Paper Weight:	128g/m2 (A4)
Dimensions (H x W x D)	166.2mm x 615.3 mm x 560.3 mm
Weight:	20.2Kg

UFRII/PCL/PS PRINTER KIT-R1	
Type:	Embedded Print Controller
CPU:	Use main unit CPU's – Canon Dual Custom Processors
Storage:	Use main unit HDD (40 GB)
Supported PDL:	PCL 5e, PCL 6, PS 3 emulation, UFRII
Supported Resolution:	UFRII / PS 3 emulation: 1200 x1200 dpi
Interfaces Standard:	10 Base-T/100 Base-Tx (RJ-45), USB High Speed (2.0)
Network OS	Novell Netware v 3.2, 4.1, 4.11, 4.2,5,5.1,6,6.5 (IPX/SPX) Windows 98/Me (TCP/IP) Windows 2000, XP, Server2003, Vista (TCP/IP) Solaris 1.1x, 2.5x or later (TCP/IP), Apple Mac OS 8.0 or higher
SENDING FUNCTIONS	
Sending Methods:	Email, iFAX, database (Salutation), File Server(IPX, FTP, SMB)
Address Book Capacity:	Maximum 1,800
File Format:	Single-page TIFF, Single-page PDF, Multipage TIFF, PDF
Sending Sizes:	A5 to A3
Scanline Density:	200x200dpi, 300x300dpi, 200x400dpi, 600x600dpi
FINISHER AD1 & SADDLE FINISHER AD2 (OPTIONS)	
Number of Trays:	3 Tray
Paper Sizes:	A5R - A3
Paper Weights:	64 - 200g/m2
Tray Capacity	Tray A: 250 (A4), 125 (A3) Sheets Tray B: 1,300 (A4), 650 (A3) Sheets Tray C: 2,450 (A4), 650 (A3)
Max. Stapling Capacity Corner/Double	50 (A4), 30 (A3) Sheets
Saddle-stitching (Saddle Finisher only)	Up to 15 sheets (60 page booklet)
Staple Capacity:	50 (A4), 30 (A3) Sheets
Folding:	V-fold (only AD2)
Attachable accessories:	2, 3 or 4 hole puncher units
Staple Finisher AD1	Dimensions (Hx Wx D) 121 mm x 646 mm x 656 mm Weight: 48 Kg
Saddle Finisher AD2	Dimensions (H x W x D) 1121mm x 649 mm x 656 mm Weight: 70.5 Kg
PUNCHER UNIT(2, 3 OR 4 HOLE) OPTIONS FOR FINISHER AND SADDLE-STITCH FINISHER	
Max. Paper Weight:	200g/m2
Punch Types:	2-hole (A3 - B5R) 3-hole (A3 - B5R) 4-hole (A3 - B5R)
Punch Dust Stock:	Approximately 3,000 Sheets
PAPER DECKS AD1& AE1(OPTIONS)	
Paper Capacity:	3,500 Sheets
Paper Size:	A4 (AD1), A3 (AE1)
Paper Weight:	64g/m2- 200g/m2
Dimensions (H x W x D)	(AD1) 574 mm x 323 mm x 583 mm
Dimensions (H x W x D)	(AE1) 574 mm x 598 mm x 621mm
Weight:	29.8kg(AD1), 45.1kg (AE1)

DOCUMENT INSERTION/FOLDING UNIT-F1	
Number of Trays:	1 tray
Capacity	100 sheets (80gsm)
Paper Sizes:	A4R, A3
Paper Weights:	64 - 256gsm
C-Fold	A4R, 65 - 105gsm
Z-Fold	A4R/A3, 64 - 105gsm
Dimensions (H x W x D)	1,242mm x 662 mm x 679 mm
Weight	Approximately 76 kg
DOCUMENT INSERTION UNIT-E1	
Number of Trays:	1 tray
Capacity	100 sheets (80gsm)
Paper Sizes:	A4R, A3
Paper Weights:	64 - 256gsm
Dimensions (H x W x D)	1,242 mm x 662 mm x 679 mm
Weight	Approximately 40 kg
SUPER G3 FAXBOARD-Z1*(OPTION)	
Applicable Line	Public Switched Telephone Network (PSTN)
Number of Lines	Single line
Transmission Speed	Super G3*: 33.6 kbps, G3: 14.4 kbps
Compression Method	MH, MR, MMR, JBIG
Transmission Type	Super G3, G3
Sending Original Sizes	A5R - A3 (from DADF)
Receiving Paper Sizes	A5R - A3
Auto Dial Function	Address Book: 1,800 destinations
Image Memory	Approximately 8,000 pages
Confidential Fax Inboxes	100
SHIFT TRAY (OPTION)	
Capacity:	500 sheets (up to 60mm)
Offset Sizes:	A3/B4/A4/B5
Dimensions (H x W x D)	256 mm x 366 mm x 466 mm
Weight:	4.2kg
OTHER OPTIONS	
Card Reader	Card Reader Attachment
Card Sets	Copy Tray
Document Tray	eCopy Suite
Encryption PDF Kit	Expansion Bus Board
Remote Operator Kit	imageWARE Suite
Searchable PDF Kit	Tab Feeding Attachment Kit
Voice Guidance Kit	USB Application Interface Board
Web Access Software	Secure Watermark Kit
Secure PDF Kit	Encrypted Printing Kit
HDD Erase Kit	Searchable PDF Kit
HDD Encryption Kit	Barcode Printing Kit
Universal Send Kit	ImagePASS-S2 controller**



imageRUNNER



* Approximately 3 seconds per page fax transmission time based on CCITT/ITU No. 1 Chart, (JBIG, Standard Mode) at 33.6 Kbps modem speed. The Public Switched Telephone Network (PSTN) currently supports 28.8 Kbps modem speeds or slower, depending on telephone line conditions.

** Available 2nd Half 2007

™ All company and/or product names are trademarks and/or registered trademarks of their respective manufacturers in their markets and/or countries. Canon reserves the right to change specifications without notice.

AUSTRALIA

Sydney
1 Thomas Holt Drive
North Ryde NSW 2113
Ph (02) 9805 2600
Fax (02) 9887 3137

Melbourne
33 Lakeside Drive
Burwood East VIC 3151
Ph (03) 9881 0000
Fax (03) 9881 0316

Brisbane
Southgate Corporate Park
18 Southgate Avenue
Cannon Hill QLD 4170
Ph: (07) 3909 5000
Fax: (07) 3909 5068

Adelaide
1 South Road
Thebarton SA 5031
Ph (08) 8201 9193
Fax (08) 8352 2810

Perth
68 Hasler Road
Osborne Park WA 6017
Ph (08) 9347 2258
Fax (08) 9242 4120

Canberra
98 Barrier Street
Fyshwick ACT 2609
Ph (02) 6206 5999
Fax (02) 6206 5933

Auckland
Akoranga Business
Park Akoranga Drive
Northcote
Ph (09) 489 0300
Fax (09) 489 0399

NEW ZEALAND